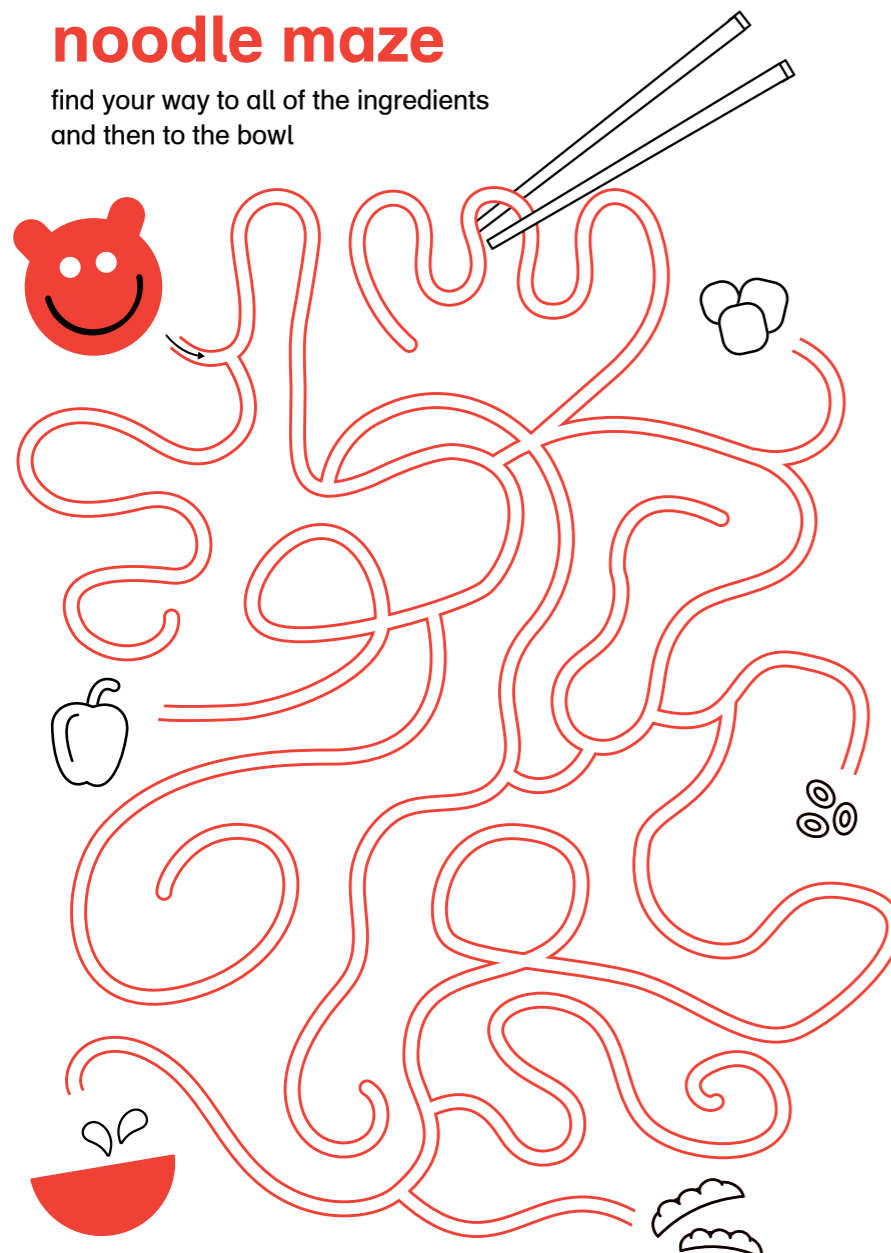


# wagamama



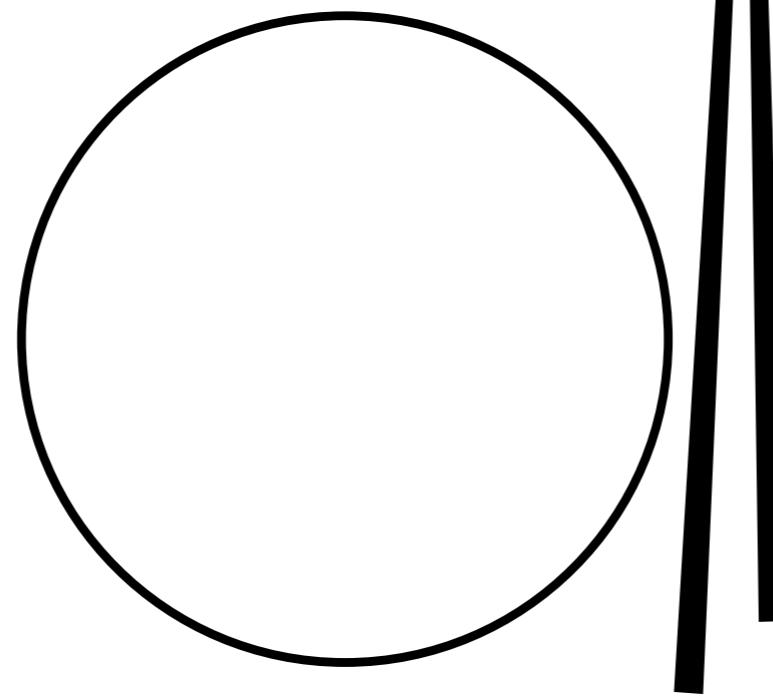
## noodle maze

find your way to all of the ingredients and then to the bowl



## creative chef

get creative! design a beautiful plate of food



## foodie finder

try to find the foodie words before it's time to eat



w	r	a	m	e	n	r	c
d	h	s	i	u	o	j	q
f	p	t	v	t	o	f	u
k	a	o	m	k	d	b	n
a	n	s	z	c	l	p	x
t	k	g	a	w	e	w	s
s	o	t	y	a	s	a	i
u	i	r	l	g	c	d	h

- \* noodles
- \* ramen
- \* katsu
- \* panko
- \* yasai
- \* tofu

## kids menu

### ramen

- 920 **mini ramen** 68  
nudler i kyllingesuppe toppet med grillstegt kyllingebryst, sæsongrønt, gulerod og majskeer
- 927 **mini veggie ramen (v)** 65  
nudler i grøntsagssuppe toppet med stegt tofu, sæsongrønt, gulerod og majskeer

### nudler

- mini yaki soba**  
teppanstepte nudler med æg, majskeer, sukkerærter, peberfrugt og amai sauce
- 940 **kylling** 62
- 941 **tofu (v)** 62
- 981 **mini chicken noodles** 65  
soba-nudler med grillstegt kyllingebryst, gulerod, majskeer, agurk og amai sauce
- 982 **mini salmon noodles** 68  
soba-nudler med grillstegt laks, gulerod, majskeer, agurk og amai sauce

### ris

- mini chicken katsu**  
dybstegt, panko-paneret kyllingebryst serveret med japanske ris, agurk og majskeer, gulerod og katsu-curry sauce eller amai sauce
- 971 **katsu** 65
- 973 **grillet** 65
- 972 **mini yasai katsu curry (vg)** 63  
dybstegt panko-paneret søde kartofler og butternut squash. serveret med japanske ris, gulerødder, agurk og majskeer og katsu-curry sauce

### noget sødt

- 913 **vaniljeis (v)** 25  
en kugle gammeldags vaniljeis med enten chokolade, eller mangosauce
- 914 **chokolade is ny** 25  
en kugle med chokolade is og chokoladesauce

### drikke

- 722 **mini æblejuice** 48
- 720 **hyldeblomst** saft af hyldeblomst 30
- 723 **mini appelsinjuice** 48
- 750 **glas mælk** 20

(v) egnet til vegetarer    kan indeholde små ben    (vg) vegansk



# wagamama



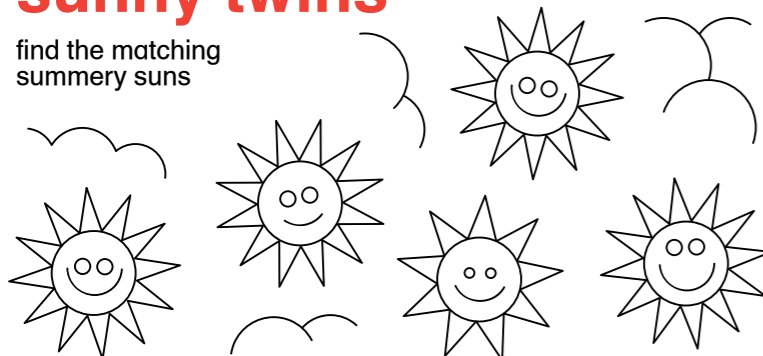
## party patterns

draw the next 3 items in the sequence



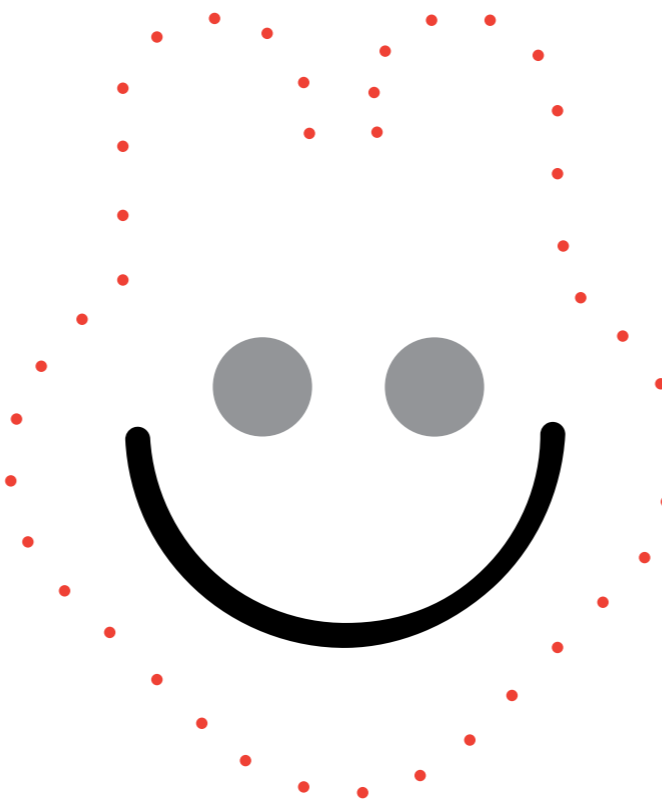
## sunny twins

find the matching summery suns



## dot to dot

who is hiding behind these dots?



## juicy scramble

unscramble the letters to find fun fruity words



namog \_\_\_\_\_

iwki \_\_\_\_\_

nabana \_\_\_\_\_

## kids menu

### ramen

920 **mini ramen** 68  
noodles in a chicken soup topped with grilled chicken breast, seasonal greens, carrot and sweetcorn

927 **mini veggie ramen (v)** 65  
noodles in a vegetable soup topped with fried tofu, seasonal greens, carrot and sweetcorn

### noodles

**mini yaki soba**  
teppan-fried soba noodles with egg, sweetcorn, mangetout, peppers and amai sauce

940 **chicken** 62  
941 **tofu (v)** 62

981 **mini chicken noodles** 65  
soba noodles with grilled chicken with carrot, sweetcorn, cucumber and amai sauce

982 **mini salmon noodles** 68  
soba noodles with grilled salmon with carrot, sweetcorn, cucumber and amai sauce

### rice dishes

**mini chicken katsu**  
chicken breast deep-fried in panko breadcrumbs or grilled, served with sticky white rice, carrot, cucumber and sweetcorn. served with your choice of either katsu curry or amai sauce

971 **katsu** 65  
973 **grilled** 65

972 **mini yasai katsu curry (vg)** 63  
sweet potato and butternut squash deep-fried in panko breadcrumbs served with sticky white rice, carrot, cucumber and sweetcorn. served with katsu curry sauce

### something sweet

913 **vanilla pod ice cream (v)** 25  
a scoop of dairy vanilla pod ice cream with either chocolate or mango fruit sauce

914 **chocolate ice cream** 25  
a scoop of chocolate ice cream with chocolate sauce

### drinks

722 **mini apple juice** 48 720 **elderflower cordial** 30  
natural elderflower cordial

723 **mini orange juice** 48 750 **glass of milk** 20

(v) dishes suitable for vegetarians    this dish may contain some small bones    (vg) vegan

